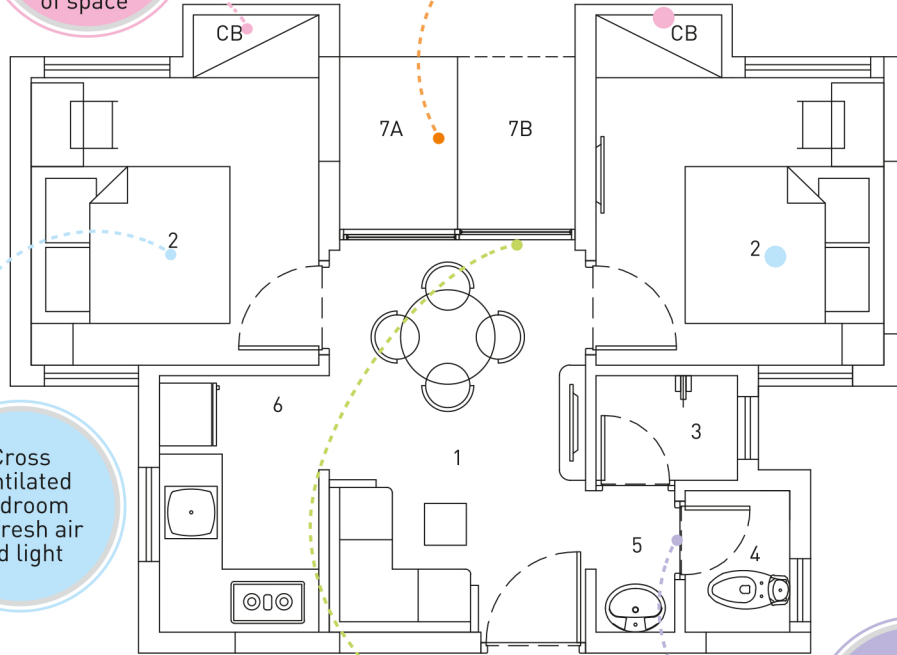


FLAT B | 2B 1T

Available in Tower A

Wall hanging
Wardrobe Space
in each room
for maximum
utilization
of space

Multipurpose
Double Height
Open Terrace for
your comfort



Cross
ventilated
Bedroom
for fresh air
and light

Glass window
beside the
Open Terrace
for more light
in the Living
Dining room

Modular
Toilet, Bath and
Wash Basin area
can be used
by 3 persons at
one time



1	Living/Dining	8'0"x12'0"
2	Bedroom	11'0"x9'0" (9'0"x9'0" without CB)
3	Bathroom	4'5"x3'3"
4	WC	3'3"x4'5"
5	Basin	4'5"x2'6"
6	Kitchen	5'0"x8'0"
7A*	Open terrace	3'8"x5'5"
7B*	Open terrace	3'8"x5'5"

Carpet area 369 sq.ft.

Built up area 446 sq.ft.

Standard built up area 620 sq.ft.